

Welsh Baccalaureate

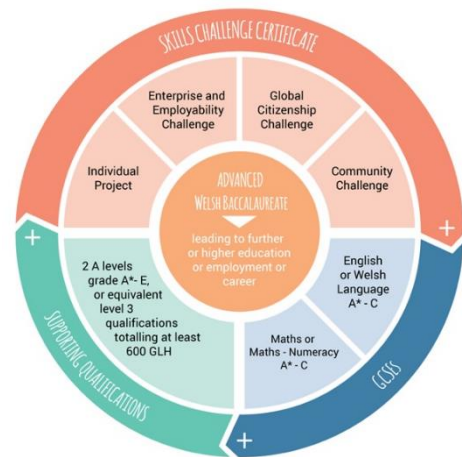
Qualification: Welsh Baccalaureate Advanced Skills Challenge Certificate

Speak to **Miss J Gavaghan** for more information.

What do students need to know or be able to do before taking the course?

The Welsh Baccalaureate is based on a Skills Challenge Certificate alongside Supporting Qualifications. The requirements of both the Skills Challenge Certificate and Supporting Qualifications must be met in order to achieve the overarching Welsh Baccalaureate.

The Supporting Qualifications include two mandatory GCSEs of English Language or Welsh Language together with Mathematics-Numeracy at grades A*-C. Students require two A levels grade A*- E, or equivalent level 3 qualifications totalling at least 600 GLH



What will students learn on this course (skills and course content)?

The Skills Challenge Certificate consists of four components which are all completed by students:

- Individual Project
- Enterprise and Employability Challenge
- Global Citizenship Challenge
- Community Challenge

The Welsh Baccalaureate aims to enable learners to develop and demonstrate an understanding of and proficiency in essential and employability skills. These are the skills that employers and next-stage educators value and which learners need for learning, work and life.

The seven essential and employability skills covered are:

- Literacy
- Numeracy
- Digital Literacy
- Critical Thinking and Problem Solving
- Planning and Organisation
- Creativity and Innovation
- Personal Effectiveness

What sort of student is this course suitable for?

The course is compulsory for all students at Y Pant 6th form.

What kind of work will students need to be able to do outside of lessons?

The course contains several controlled assessments. During the course there is a mixture of individual and team work tasks, much of this work can be completed outside the classroom.

What is the course content and how is this assessed?

Further information about the qualification can be obtained from the WJEC website

https://www.wjec.co.uk/qualifications/welsh-baccalaureate-advanced/#tab_overview

All components of the course are assessed through coursework which is internally assessed and then externally moderated by the WJEC.

The 4 components have a weighting towards the overall grade:

- | | |
|--|-----|
| ● Individual Project | 50% |
| ● Enterprise and Employability Challenge | 20% |
| ● Global Citizenship Challenge | 15% |
| ● Community Challenge | 15% |

What could students go on to do at the end of this course?

By passing the Advanced Welsh Baccalaureate Advanced Skills Challenge Certificate, learners will be gaining a qualification that is the same size as an A level and graded in the same way (A* to E). UCAS allocate the same tariff points for university entry as for an A level – the number of points allocated to each grade match the points for the equivalent A level grade.

With the exception of three, all universities in the UK accept the Welsh Baccalaureate as an A Level equivalent. Many, where offered with three traditional A levels, will reduce the offer made to prospective students by a grade e.g. AAB to ABB + Welsh Baccalaureate.

